

Mersey Park Primary School



Headteacher's Newsletter - February 2020

Home /School Discussions

A separate letter will be sent out to you regarding Home/School Discussions which take place on **Monday 10th & Tuesday 11th February for KS1 and Tuesday 11th & Wednesday 12th February for KS2**. We look forward to seeing you to acknowledge your child's achievements and discuss ways forward with class teachers. It is a chance for you to meet your child's class teacher, look at your child's work to see the progress they are making, discuss their attendance and punctuality and celebrate their hard work.

We hope you all can make it.

Don't forget
parents'
evening!

February Dates to Remember



Year 3 Trip — Port Sunlight
Wednesday 5th February
(AM)

Home /School Discussions— KS1

Monday 10th February/
Tuesday 11th February



Home /School Discussions— KS2

Tuesday 11th February/
Wednesday 12th February

School Closes for Half Term Holiday

Friday 14th February

Half Term Holiday

Monday 17th February — Friday 21st February



**Year 5 Trip — Liverpool Anglican
Cathedral + Living Rooms**
Wednesday 26th February

Trophy Assembly

Friday 28th February



Medical / Dental Appointments

We have become aware that a lot of children are missing valuable time in school due to medical appointments.

Please ensure that, if possible, all pupil medical and dental appointments are made for the end of the school day or during school holidays.

If this is not possible, pupils should come into school before and/or after their appointment.



Thank you to everyone who came along to our Christmas Fair at the end of last year. We raised an amazing **£1000**



Keep an eye on our page for our next event!

Mersey Park Primary School Association

Arriving Late at School



Please be aware that **all** pupils who arrive late at school, i.e. after the gates have been closed, **must** be brought into school via the reception area by the school office.

It is very important that each child is signed in by the adult who has brought them to school, correctly on our entry system, so our registers in school are correct.



School Reception Area

We would respectfully ask that parents, carers and children do not use the reception area to wait at the start of the school day or the end of the school day.

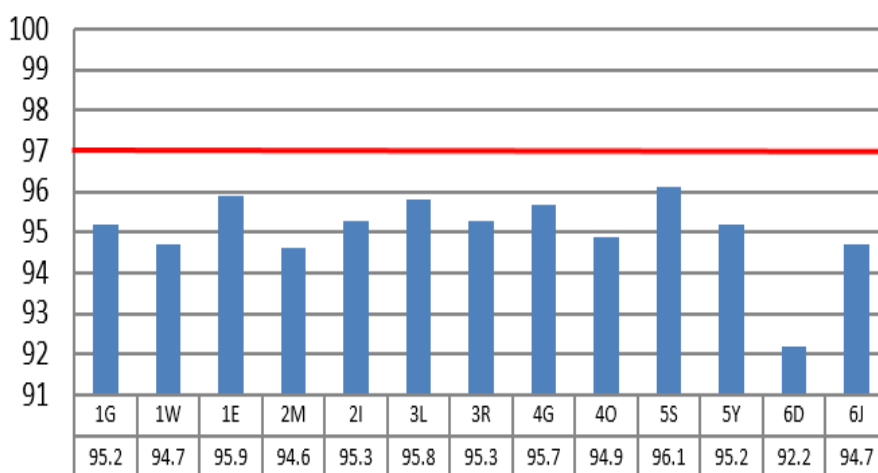
Thank you for your support!



Attendance

Current whole school attendance is **95.8%**. Our target this year remains at **97%** so we are below target but this has improved since last month. Please see the graph for attendance for your child's class. Congratulations to **5S** who continue to have the best attendance so far this year. Congratulations also to **2I**, **4G**, **4O** and **5Y** who have all improved their attendance since last month.

Attendance September 2019 - January 2020



There are currently **45** children in school whose attendance has fallen below 90% which places them in the **persistently absent** category. These pupils may have taken time off due to unavoidable reasons such as requiring an operation. However, some pupils may fall into this category due to holidays taken in term time or frequent unexplained absences. We are working hard to support these pupils in school to understand the importance of good attendance and to make sure that they are only staying off school when it is completely unavoidable. Parents/Carers of persistently absent pupils will be invited into school to discuss actions to help improve attendance and a parenting contract will be agreed.

If you are concerned about your child's attendance or punctuality do not hesitate to contact school staff for support.



Follow Us @MPPS_Wirral

Don't forget to check the website calendar as it is updated regularly.

