

# Mersey Park Primary School



## Headteacher's Newsletter - January 2022

### Covid19 Guidance

Following new COVID guidelines, please could we remind all parents, carers and visitors to school that masks **must** be worn when entering the school building.



We would also request that daily LFT test should be carried out if you or your child are identified as a close contact of anyone who has tested positive for Covid

Thank you for your support.



### January Dates to Remember

**Staff Development Day**

**School Closed to Pupils**

**Tuesday 4th January 2022**



**CHILDREN WILL RETURN TO**

**SCHOOL ON**

**WEDNESDAY 5th JANUARY 2022**



**Trophy Assembly (Pupils Only)**

**Friday 7th January**



### Class 6P Teddy Bear Raffle



Thank you to everyone who bought a ticket

for Class 6P's Teddy Bear raffle before the Christmas holidays.

We raised an amazing **£148.00** for our class



### Upcoming Events

Check our website latest news section and the school notice boards for details of upcoming events happening in and around school, family support and



Follow Us @MPPS\_Wirral

**"Be Nice, Work Hard, Never Give up"**

### September 2022 Admissions

If you have a child who was born between the 1<sup>st</sup> **September 2017** and **31<sup>st</sup> August 2018** then you now need to think about applying for a Foundation 2 (Reception) place for your child to start school in September 2021. Applications should be made online at [www.wirral.gov.uk/school-admissions](http://www.wirral.gov.uk/school-admissions).

Primary preference packs are available from all primary schools, One-Stop-Shops and libraries. Please ensure applications are submitted by:

**15<sup>th</sup> January 2022.**

If you require any assistance please contact the school office.

## IMPORTANT

Please remember to follow our invitation and download our school app.



All future messages, letters, information and updates from school will be made

via the app. If you need any assistance please contact the school office.



## Neo Community Social Supermarket

Remember our Social Supermarket is now open each **Monday** and **Wednesday** afternoon from 2.30pm until 3.30pm

All parents and carers are welcome. Payments can, now be made by card and cash.

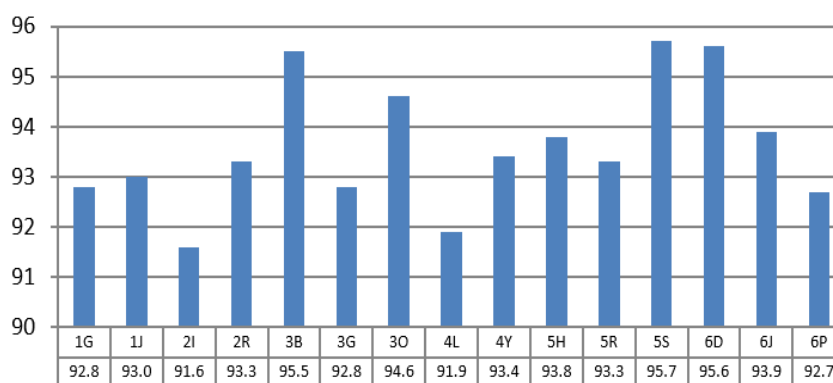
Access to the Social Supermarket is via the caretaker's house, Downham Road.

Social Supermarket

## Attendance

Current whole school attendance is 94.5%, which has gone down in the last month. The class with the best attendance so far this year is now **5S** with 95.7% - congratulations! All the classes in school are working hard in school to try to improve their attendance, in order to win the weekly Attendance League and the chance to be entered into a raffle to win a box of chocolates to bring home, and to gain the parts to add to their class Potato Head. We also have our weekly £5 for 5 reward, where a child's name is randomly selected and if they have been in school every day in that week they win £5. If they have had a day off, there will be roll over and the money will be added to the prize for the following week.

Attendance September 2021 - December 2021



Well done to **5R**, **6D** and **6P** who have successfully improved their class attendance, during December.

Can parents/carers please ensure that if children are absent from school that a reason is provided every day, so we are able to authorise the absence. If we are not informed of the reason or if the reason is not acceptable, then the absence will be marked as unauthorised. Ten sessions (five days) of unauthorised absence within two half terms may incur an Education Penalty Notice, the cost of which is £60 per child for each parent, if paid in the first 21 days.

If you are concerned about your child's attendance or punctuality do not hesitate to contact school staff for support.