

Mersey Park Primary School



Headteacher's Newsletter - February 2022

Foundation Stage 1 Intake 2022

If you have a child who was born between the **1st September 2018** and **31st August 2019**, and will therefore turn **3** before **31st August 2022**, then you can apply for a Foundation Stage 1 (Nursery) place for your child to start in September 2022.

Application forms can be collected from our school office and once completed should be returned together with proof of your address and a copy of your child's birth certificate or passport. The admission process will begin very shortly, therefore we would kindly request that all applications are completed and returned to the school office by **Friday 26th March 2022**.

If you are unable to visit school please email the school office and we will arrange for an application form to be sent to you.



schooloffice@merseypark.wirral.sch.uk

February Dates to Remember

Half Term Holiday

School Closed to Pupils

Monday 21st February – Friday 25th February

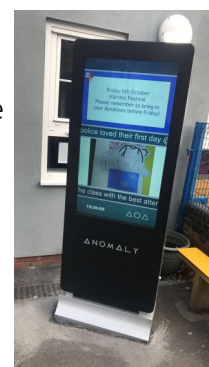


CHILDREN WILL RETURN TO SCHOOL ON

Monday 28th February 2022

Anomaly Boards

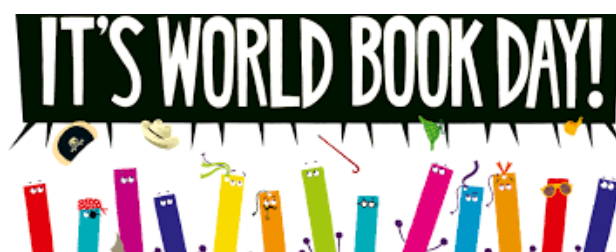
Our Anomaly Boards in our playgrounds are now up to date and will be active each day. Please take a moment to read the messages, notices and information they provide.



World Book Day

Thursday 3rd March is World Book Day. The children will be able to come to school dressed as a favourite/well known book character or wearing a hat inspired by a book character.

Further details will follow!



Polite Request

Unfortunately we have recently had incidents of dog dirt being walked into to school. Please be vigilant on your journey to school and alert the staff on the gate if the worst should happen!

If you and your child would like to make a poster reminding dog owners to pick up and bin it, we will laminate them and attach them to our railings.



IMPORTANT

Please remember to follow our invitation and download our school app.



All future messages, letters, information and updates from school will be made

via the app. If you need any assistance please contact the school office.



Follow Us @MPPS_Wirral

Neo Community Social Supermarket

Remember our Social Supermarket is now open each **Monday** and **Wednesday** afternoon from 2.30pm until 3.30pm

All parents and carers are welcome. Payments can, now be made by card and cash.

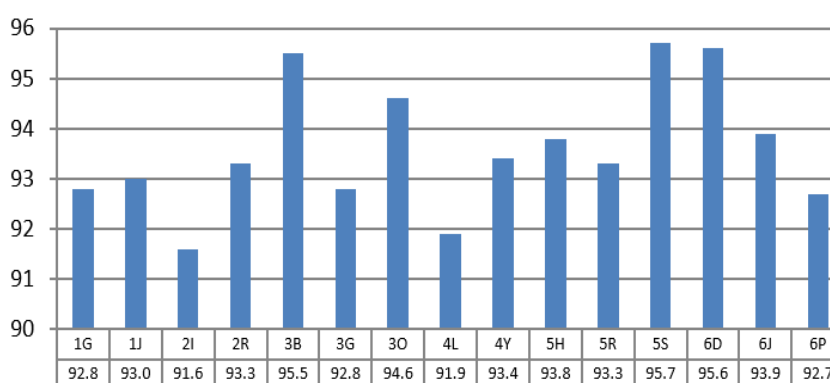
Access to the Social Supermarket is via the caretaker's house, Downham Road.

Social Supermarket

Attendance

Current whole school attendance is 94.5%, which has gone down in the last month. The class with the best attendance so far this this year is now **5S** with 95.7% - congratulations! All the classes in school are working hard in school to try to improve their attendance, in order to win the weekly Attendance League and the chance to be entered into a raffle to win a box of chocolates to bring home, and to gain the parts to add to their class Potato Head. We also have our weekly £5 for 5 reward, where a child's name is randomly selected and if they have been in school every day in that week they win £5. If they have had a day off, there will be roll over and the money will be added to the prize for the following week.

Attendance September 2021 - December 2021



Well done to **5R**, **6D** and **6P** who have successfully improved their class attendance, during December.

Can parents/carers please ensure that if children are absent from school that a reason is provided every day, so we are able to authorise the absence. If we are not informed of the reason or if the reason is not acceptable, then the absence will be marked as unauthorised. Ten sessions (five days) of unauthorised absence within two half terms may incur an Education Penalty Notice, the cost of which is £60 per child for each parent, if paid in the first 21 days.