

Mersey Park Primary School



Headteacher's Newsletter - May 2022

SATs 2019

SATs – Advance Warning of Test Week

Please note that the week beginning **Monday 9th May** is SATs week. It is very important that all Year 6 children are in school each day that week and are in on time to ensure that they do not miss any of the tests.

Key Stage 1 children will also take SATs tests in May, these will be held the week beginning Monday 16th May.

Please help us by making sure children are getting to bed early and having a healthy breakfast so that they are ready to do the best they can in their tests.



May Dates to Remember

May Day Bank Holiday
School Closed to Pupils

Monday 2nd May



Staff Development Day
School Closed to Pupils

Thursday 5th May



Year 6 Pupils will be invited into school for the morning of this development day for additional SAT's revision prior to their tests the following week.

Year 6 SATs
Monday 9th May – Friday 13th May



KS1 SATs
Week Beginning Monday 16th May

Half Term Holiday
Monday 30th May – Friday 3rd June



Polite Request

Please could remind all parents and carers that dogs **MUST NOT** be brought onto the school premises and playgrounds.
Thank you.

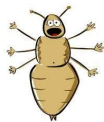


Sun Safety

As the weather is now improving, please remember to apply your child's sunscreen before they come to school and provide a cap, to be worn during outdoor playtimes.



Follow Us @MPPS_Wirral



Bug Busting

A reminder that the **10th** of the month is 'Bug Busting Day' when we encourage parents and carers to check their child's hair.

If you have any concerns about persistent head lice please speak

to **Mrs Hardy**, our Home School Liaison Officer.



Up coming Events

Check our website latest news section, our playground notice boards and your School App for details of upcoming events happening in and around school.

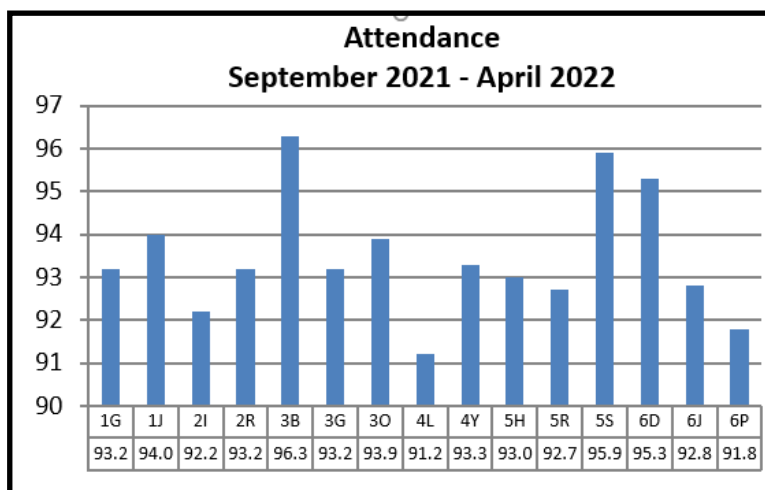


You can also call in to the school office as we often have details of local events, flyers and vouchers.



Attendance

Current whole school attendance is 94.4% which is well below our school target of 97%. The class with the best attendance so far this this year is **3B** with 96.3% - congratulations! All the classes in school are working hard to try to improve their attendance. Well done to **1J, 3B, 3G, 3O, 6P, 6D** and **6J** who have successfully improved their class attendance, during April.



School continues to work closely with the parents/carers of pupils who are in, or are close to being in, the Persistent Absence category, with below 90% attendance. This would mean that so far this year they have missed 13 or more days of school. See the table below for numbers in each year group.

Number of pupils who are in the Persistent Absent category					
Year 1	Year 2	Year 3	Year 4	Year 5	Year 6
15	12	11	8	11	10

There is still time to ensure that your child does not remain in the Persistent Absence category by making sure that your child is in school every day, between now and the summer holiday.

If you require any support with your child's attendance or punctuality please do not hesitate to contact school, either through the school office or your child's classteacher.